

STAVERTON NEWS

SUMMER 2020





FROM THE EDITOR...

Welcome to the summer edition of Staverton News which will update you on all the happenings in Staverton over the last few months.

This edition includes an update on how Staverton has been managing during Lockdown, an interview with a local volunteer, and some beautiful rainbows designed by children in the village. Also, turn to page 7 to see what a group of Staverton girls have done to raise money for the NHS.

Thank you as always to everyone who has contributed to the newsletter, whether that be by submitting an article or by volunteering to deliver it. Also, thank you to Superior for printing the magazine and donating the money to the Superior Community Fund in the village.

Also, thank you to Chris Knutson for taking the beautiful photos for the front and back cover. The front photo shows the weir at Staverton behind the Cereal Factory and may be familiar to fishermen and local walkers.

If you would like to submit an article, advert or photograph for the magazine, please don't hesitate to get in touch. I would love to hear from you.

Natasha Webster



Wildlife in Staverton

Thank you to Martyn for sending in the photo of the family of cygnets below. They were spotted on the canal between Staverton and Whaddon. Just like last year's family, there are nine baby cygnets who look very fluffy and cute indeed! Do keep an eye out for them if you take a walk along the canal. Chris Knutson spotted what can only be assumed as the same family in the "lagoon" area in Staverton and his wonderful photo of the family is on the back page of this edition.

Meanwhile, in School Lane Hilary captured some bumble bees enjoying this vivid shrub as well as a woodpecker in the road.

In another garden in School Lane there have also been sightings of hedgehogs. Although the photo is a little dark, you can just about make out one of the prickly creatures in the photo on the far right.

A couple of residents have also spotted Red Kites in the village. The birds became very rare in UK but were reintroduced into the Chiltons about 30 years ago and their range has expanded ever since.

Please do send in any photos of wildlife or flowers in the village and I will be happy to include them in the next edition.



MEET PICKLE

Staverton resident Pickle has just turned 1 and is a miniature dashchund. He is dapple in colour and has one blue eye and one brown eye.

Pickle is quite a character and has a habit of stealing your socks whilst they are still on your feet! His favourite pastimes include playing ball and sunbathing.

His owner Georgia says of him: "He likes to bark at the swans outside our back garden and is a big

"scaredy cat" of any dog he doesn't know. His best friend and brother is my son Grayson (pictured) – Pickle just loves Grayson to bits." Pickle's doggie pals are Rosie, Dolly and Hank who all live on Swan Drive.

If you would like your four-legged friend to feature in the next edition of Staverton News then contact the editor at:
editornatasha91@hotmail.com



Weekly Online Pub Quiz

Councillor Lindsay Shaw runs a weekly online pub quiz. The small entry fees go towards the NHS Charities Together fund. £2 per team plus £1 per person. **Every Thursday at 8:15 after clapping.**

Questions and answers given through WhatsApp, mark your own, input your own scores to shared scoreboard, six rounds, jokers and bonus points. Usually runs from 8:15 p.m. until 9:45 p.m.

Please contact **Lindsay on 07583 213420** if you fancy being involved.



THE NEXTDOOR STAVERTON APP

Nextdoor is an app first released in the UK in 2016, having long been established in the USA and other countries. Its strength is that it is split into neighbourhoods, of which Staverton is a good example because of the clarity of its boundaries. Those who register to use the app are placed in the neighbourhood in which they live.

What does the app do for Staverton members?

It lets you send out announcements to all Staverton members in your neighbourhood and optionally to all neighbourhoods adjoining Staverton, such as Hilperton etc. These announcements include things like "Bike for Sale", "Lost Cat", "Wanted" ie, the sort of things that you would put on a postcard in the local shop window. It is (currently) free to do this.

It is as good or as poor as the quality and relevance of posts that locals make on it. Amongst other things it has been used to enlist support volunteers during lockdown, to get hold of a bag of unused cement, to lend out a power tool and other council-related notices - all of which have been useful for members. It is also regulated by users as there is a reporting facility for inappropriate comments.

Staverton currently has **353 members representing 290 households**. This is **33%** of all Staverton households. This might not sound much however, in comparison to our neighbouring areas it is impressive. Hilperton has 104 members and Holt just 17. The Nextdoor app is available from the app store and it is quick and easy to login and get started.

NHS staff thank the Staverton girls who have raised over £500 for the NHS. Turn to page 7 to find out more.



PARISH MATTERS

So much has changed since our last Newsletter that many of us feel as though we live in a parallel universe. However almost everyone I speak to is managing to tolerate the new lifestyle and has maintained a positive attitude. Staverton has certainly become a friendlier place and I am delighted to have got to know my neighbours better.

The recent **Celebration of 75 years since VE Day** was another opportunity to meet others to mark this great occasion whilst social distancing. If ever there needed to be a reminder of how much human sacrifice means to us just as much now as 75 years ago during the war, this was a great way to remember and appreciate it. My neighbour spent many hours making lovely red, white and blue bunting to get us all in the mood and I sincerely hope this won't be the last time we get to use it.

Countless dog owners have told me that they are concerned that their pets are now so spoiled with all the attention and long walks that they will be missing it when we start to go back to work and school. Also our children have made such a great effort to dress up their windows with rainbows and homemade items to cheer us all up as we take our walks around the village.

Many of us have been doing our bit by making face mask extensions, laundry bags and cotton face masks to show support for the wonderful work our NHS and other essential support workers are doing to protect, provide and care for us all during this terrible time. They are putting their health at risk to help us all and Staverton Parish Council salutes everyone of you.

I was encouraged by the amount of help offered by many residents to shop for essentials for those who need to isolate. An immediate offer came from Staverton Councillor Lindsay Shaw who worked tirelessly to set up a Helpline to bring volunteers and those in need of help together as soon as possible. Wiltshire Council and Trowbridge Town Council offered support and help immediately after the lockdown was announced and we hope that all those people in need of support have now been contacted.

If you need any more information please see our website at www.stavertonparishcouncil.org.uk or contact Councillor Shaw on 07583 213 420.

NEWSLETTER

As soon as lockdown was announced, Natasha our Editor contacted us with some excellent ideas to produce an extra edition of the newsletter to extend our support to Staverton residents. We were pleased that Cllr Shaw worked with Natasha to circulate a special edition to every household in Staverton. We hope that everyone found this helpful.

AUDIT AND YEAR END 2019/2020

Despite Corona Virus restrictions, day to day work still needs

to continue at the Parish Council and there is a legal duty to complete Year End Accounts and Auditing of our procedures.

Social distancing has meant that the Parish Council has been unable to hold a normal meeting but new Government regulations have permitted councils to hold temporary remote meetings. It was necessary for Staverton Parish Council to hold some kind of a formal meeting to approve Year End Accounts and discuss the recent Internal Audit Report 2019/20 from Auditing Solutions Ltd. This meeting was held on Monday 18th May 2020 at 6.30 pm. Once again the internal audit report found *"No issues arise in this area and, on the basis of the satisfactory completion of our detailed work on the Council's accounting and other relevant records for the year, we have signed off the Internal Audit Report in the year's Annual Return assigning positive assurances in each area"*.

This report can be accessed on our Parish Council website.

Reserves: At 31st March 2020 the reserves were as follows: Precept Account £4981.67, Field Maintenance Fund: £6668.31, Petty Cash £81.46, Gratuity Fund £5333.59, Julian Hodge Investment 1 £50,000 and Investment 2 £15,000.

The balance of funds brought forward from 2018/19 was £16,464, the Annual Precept for 2019/20 was £24,012. Other Receipts were £13,137, Staff Costs £14,909. All other Payments £21,636 and Balance Carried Forward was £17,068. The Parish Council Total Fixed and Long Term Assets were £267,383 to include £65,000 invested with Julian Hodge Bank.

A copy of the Annual Governance and Accountability Return can be viewed on the Parish Council website.

If you would like a copy of the unaudited accounts please email Mrs June Jones at parishclerk@stavertonparishcouncil.org.uk.

THE PARISH COUNCIL REGRETS THAT THE TENNIS COURT CANNOT BE OPENED JUST YET AS WE CANNOT PROVIDE THE MANNED SERVICE REQUIRED BY THE GOVERNMENT TO ALLOW THIS FACILITY TO BE USED IN A SAFE VIRUS-FREE WAY BY ALL OUR RESIDENTS. HOWEVER WE WILL OPEN IT AS SOON AS WE ARE ABLE TO.

PLEASE ENJOY THE PLAYING FIELD AS LONG AS YOU KEEP IN HOUSEHOLD GROUPS AND ONLY MEET WITH ONE OTHER PERSON FROM ANOTHER HOUSEHOLD AT A SAFE 2 METRE DISTANCE.

THE FOOTBALL GOALS CANNOT BE USED AT ANY TIME. KEEP A SAFE 2 METRE DISTANCE WHILST ENTERING AND EXITING THE GATES TO THE FIELD. USE HAND SANTISERS AT ALL TIMES.

PLEASE FOLLOW THE GUIDELINES SET OUT BY THE GOVERNMENT.

VILLAGE HALL BOOKINGS *(Hall closed until further notice)*

Cllr Lindsay Shaw is Bookings Manager for the Village Hall. If you would like to book the village hall it costs £12 per hour plus VAT or a lower rate for multiple hires. To see if your date is available, you can access the diary for the village hall on the Parish Council Website:

www.stavertonparishcouncil.org.uk

Please contact Cllr Shaw on:

stavertonvillagehallbookings@stavertonparishcouncil.org.uk

The Parish council next meets on **Monday 13th July 2020 at 7pm at Staverton Village Hall**. (This is subject to the Government's regulations for restricting the Corona Virus. If you would like to contribute an Agenda item please contact the Parish Clerk.

If you have any queries regarding maintenance around the village, Wiltshire Council invites residents to contact them on their "MY WILTSHIRE" website, where all requests must be answered and dealt with in a timely manner.

A Million Rainbows...

I've seen a million Rainbows,
and just not those up in the sky..
placed in oh so many windows,
and on Children's faces passing by..
Vibrant every colour, a wonder still to see..
captures the imagination
within the child in you and me..

Each Rainbow carries a message,
one that comes deep from the heart,
so many Thanks are offered up
to those who play their part..
The Key Workers and NHS,
all have our gratitude..
and what nicer way than Rainbows,
are the symbol that we choose..

For when the skies are grey and dark,
and the rain begins to fall,
that little ray of sunshine,
creates a prism for us all..
An arc of pure refracted light,
though brief its stay may be,
its spectrum band of colours,
will bring joy from misery.

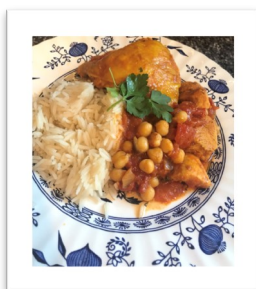
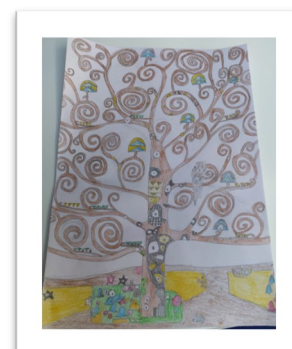
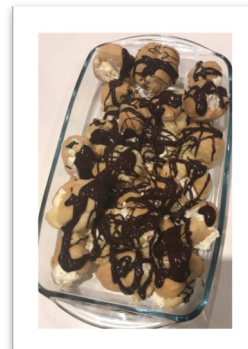
So please accept the message
that now within a Rainbow holds..
To all those who help to heal us,
and the Many yet untold.
For after rain, the sun will shine,
may Rainbows come into view..
Thanks to the Hero's, every one..
and that includes my friends,
You Too!

Bev' Borresen 2020

EMMAUS SCHOOL

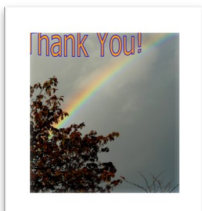
Since the last magazine, we have seen a complete change in how we do school. Whilst still teaching our key-worker children on site, our teachers and our very supportive parents rose to the challenge of home learning. Technology has been used extensively as our senior students engaged in Zoom and Google Hangouts lessons, supplemented by an online programme kindly gifted by one of our parents. Our younger children were sent work from their teachers on a daily basis, with parents facilitating and supplementing their learning. Photos of completed work were sent back to the teachers for them to mark, and even food technology and art work has been done at home with outstanding results! We have been so blessed and amazed at how our pupils and their parents have coped with this new way of learning, however we have really missed our pupils and are looking forward to having some of the year groups back in school after half term.

We currently have **spaces available** for September for Reception and Year 7 starters (with other years upon application). For further information please contact the School Office on telephone 01225 782684 or email info@emmaus-school.org.uk



A "Lockdown" cartoon by Sam, some tasty looking profiteroles made by Katie, a drawing by Faith and a chicken tagine made by Hannah.

Many people joined in the VE Day celebrations in May by decorating their houses with flags, posters and even life size models of soldiers. Thank you to Chris Knutson for capturing just a couple of the many displays.



LIFE IN LOCKDOWN - STAVERTON STYLE

Staverton's Lockdown Support Volunteers Network - By Lindsay Shaw

As the Covid19 pandemic began to infect UK citizens and lockdown began, support mechanisms were needed for the elderly, vulnerable and people with medical conditions. Staverton Parish Council (SPC) were asked by Wiltshire County Council to put in place appropriate local support, which as I'm sure you will agree, was an important request. SPC agreed that I could manage a support network.

A 2-page "**Staverton News: Solidarity Special**" was written by editor Natasha, giving the contact details for both SPC and the parish church. It was printed at my home as Superior printers, who print the regular parish magazine, were not operating at the time. It was delivered by the Staverton Newsletter volunteers and every parish household received a copy.

Notices were put up on SPC notice boards and website. The Staverton section of the newish neighbourhood app Nextdoor (NDS) was used to promote the contact details. NDS enables messages and updates to be published instantly to its users. Initially 20% of Staverton households used NDS but with some encouragement the uptake has risen to 290 households, (33%) and continues to grow.

The Solidarity Special and NDS asked for Staverton volunteers to come forward if they felt able to help with tasks like shopping for people, collecting prescriptions and other errands, which some people were unable to do for themselves because of lockdown, shielding and self-isolation.

After a few days I had **13 volunteers**, which was brilliant. All volunteers enrolled on NDS and used WhatsApp. I created a WhatsApp group called **Staverton Support Group** so it was quick and easy to contact all volunteers. We were up and running.

A small group of supporters from the **Canal Side Churches** coordinated by Rev. John Rees also volunteered. John and I spoke early on and we informally agreed that church volunteers were perhaps better suited to offer chat support rather than run errands, although this was not a hard and fast division.

Elm Close is known as Old Staverton, built a long time before the much larger Marina development. It is home to a good number of elderly people, who mostly know each other quite well. Di Lavis is well known on Elm Close and Di agreed to look out for any Elm Close residents who needed support. Di has been happy to call in on residents and to contact me if there were any errands with which volunteers could help.

To support the volunteers I issued a list of Data Security basics, a Covid-19 Volunteer pack (an excellent guide from Wiltshire CC) and a laminated credit card size identity card.

Requests for support came early on for shopping and prescription collections, so a few pairings were made. Routines were established to pass on shopping lists, collect money and deliver goods while still maintaining safe practices. Texting, BACS transfer and lots of bags-for-life were all useful. Once a pairing was made it tended to continue for future/repeat support requests.

On reflection the setting up went well, and the good news is that there were **more support volunteers than needed for the number of requests**. Better this way round! I think that actually there was a lot of informal support (family and friends) already established that responded unseen.

The volunteer network continues to operate and can quickly respond to new requests. It may even offer services when times begin to move towards a new normal.

I believe Staverton is a better place because of the lockdown period - many people have found time to consider things outside their previous routines. There have been more family visits to the sports field, more people having a longer chat and more cyclists about. The April weather certainly helped.

Here are a few words from **Emma, who joined the network as a volunteer**:

"Staverton's Lockdown Support Volunteers Network is a vital link to the community. The network has enabled the people of Staverton to come together in a time of crisis and help one another out. It has also provided a fantastic way for us to get to know our neighbours better.

I volunteered because I wanted to help and to integrate more with my community. I understand how difficult it can be for people on their own, especially when they may not have family close by.

The elderly in particular often worry and COVID 19 has impacted that further, with some of them feeling particularly anxious during this time. I help out a lovely elderly lady called Rosena who lives alone.

I have shopped for Rosena in her favourite shop Tesco. You can see it means a lot to Rosena to have someone visit her and take care of her shopping for her. Rosena is meticulous to detail and always leaves clear instructions for whoever is helping her that week. She also likes to stay in contact with the volunteers who help her and will often ring to say thank you after you have dropped the shopping off for her as she is so grateful.

You can fit volunteering around your own routine, whether you are doing your own shopping or picking up a prescription for example. Volunteering is a great way to get to know more people in your neighbourhood. I would definitely recommend it."

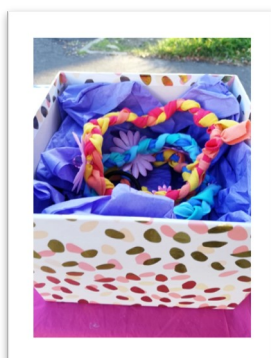
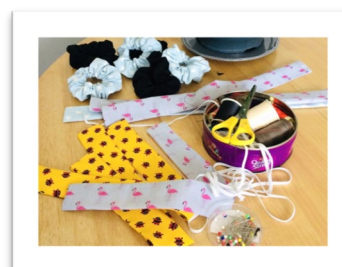
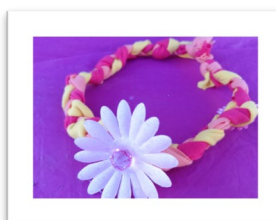
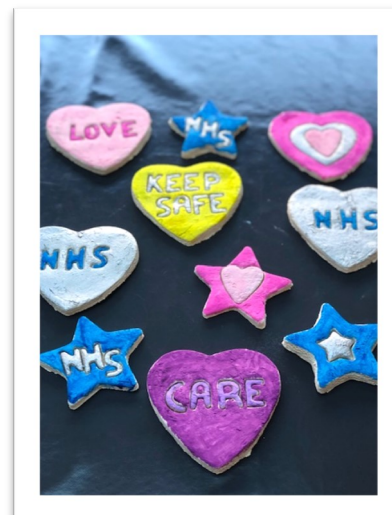
SUPPORTING THE NHS

A special mention goes must go out to four girls who, since not being able to go to school, have been busy raising money for the NHS. **Ava, Amelia, Manon and Olivia** all met whilst at Staverton Primary School and have been best of friends ever since.

In order to help our “NHS Heroes”, they have been making things and selling them on a little stall outside their houses in Staverton. Their stall was set up in Marina Drive and they would like to thank everyone who visited.

The girls have made a combination of salt dough plaques, hair scrunchies, hair bands, body lotions, lip scrubs, friendship bracelets along with other bric-a-brac and NHS badges, all of which they displayed on the stall to sell. Along with cash donations the girls have set up a just giving page www.justgiving.com/fundraising/yummycrafts.

At the time of writing they had raised **over £500** which will be donated to the **Forever Friends Appeal**, which is the charity of the Royal United Hospitals Bath (RUH). The money will fund equipment, research and innovations, as well as ensuring the wellbeing of the staff who work there.



CHASE THE RAINBOW...

For those who enjoy taking a walk around Staverton, you will undoubtedly have spotted the beautiful rainbows, which have been displayed in the windows of many homes in the village. Their vivid colours have certainly helped to brighten up the streets and it has also been lovely to see many posters which thank the NHS staff. You may also have seen some teddy bears and other cuddly toys in the windows as well. Thank you to everyone who has taken part and to those who have sent in photos. Here are just a few of the designs...



Amber and Izzy



Amber and Izzy have also displayed some rainbows and Easter eggs in the window at The Old Bear.



Maisie and Poppy



Joshua (7) and Keira (4)



Made for Staverton House Care Home by Alexander

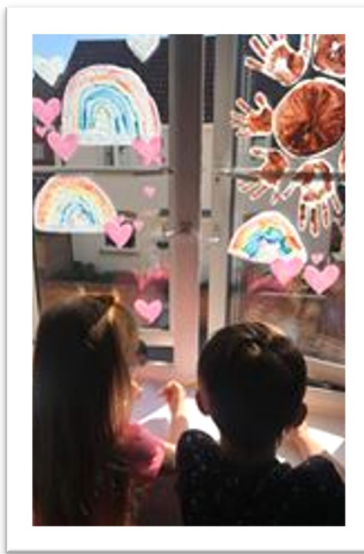


Staverton School's rainbow

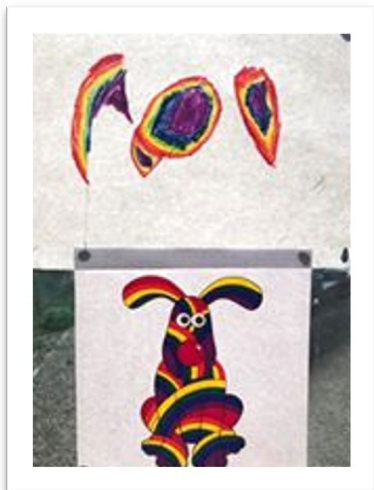
...THROUGH STAVERTON



A beautiful window design made by Blake,
Violet and Delilah



Mia and Holly



Diane and Cameron



Oscar (5)



Arillia and Lawson



Neave



Fleur and Ella



Ava

WILTSHIRE COUNCIL

Covid-19

When the lockdown began all the local parish councils swung into action and did their best to make sure their residents, especially those having to self-isolate, were safe and well and getting the necessary supplies.

For Wiltshire Council staff it's meant not just getting used to working from home but also doing different work to normal. WC set up a 'resilience hub' to help those who needed help, including those discharged from hospitals into care or their own home.

Then there's been the job of distributing the money allocated by the government to help the economy: so far about **£80 million has been paid out to 6,700 businesses in Wiltshire.**

As councillors we found ourselves without the usual round of meetings, though since the Coronavirus Act changed the law to allow virtual meetings a few of these, such as Cabinet and Strategic Planning, have now started up. We're yet to see the full economic impact of Covid, but as far as Wiltshire Council is concerned the budgetary position is going to be very difficult. Despite the emergency funding provided so far the council's potential liabilities could exceed its cash assets by around £40 million by September.

Moving on to brighter things ...

Staverton Butterfly Garden

The Pollinator Patch in Staverton is now in place. Wild Wiltshire say they had lots of community interest and comments from passers-by when they did the work on March 11th and 12th. They have created a planted area, filled with pollinating perennials that should by now be establishing and filling the borders. They also sowed a wildflower mixture over the top to gap fill bare soil and suppress weed regrowth whilst the perennial plants take time to fill out. A number of native shrubs were planted and fitted with eco-tree guards, including Dog Rose, Dog Wood, Spindle and Alder Buckthorn. A post and rope boundary line was installed to protect the area and designate it. The soil mounds either side have been trimmed but left intact to encourage some young regrowth of the natural ground flora, including nettles, which are a key food source for many butterfly lifecycles. Eventually the whole area should merge into one meadow-like scene.

The Covid restrictions and the drought haven't helped as far as maintenance goes, but we hope to get some weeding and tidying done shortly!

Staverton Autumn Spring-clean is on October 11

Thank you to the small but effective team who turned out on Sunday March 8th and picked up a car-load of litter from around the village. The next Staverton litterpick will be on **Sunday October 11th at 1030 am** (virus permitting). Assemble at the Village Hall off Cygnet Way. Equipment will be provided, and light refreshments (tea, coffee, biscuits etc) will be available. All welcome!

Please send me an email if you'd like to be added to the mailing list to get a reminder nearer the time.

Spring Flowers for Staverton

Let's hope next spring will be a better spring than this one. Residents have suggested that our next project to brighten the village should be some daffodils. These will be planted in the autumn at two sites – on the roadside verge near the club opposite Cottles Barton, and on the grassed area between the back of Marina Drive and the playing field. Wiltshire Council highways and streetscene departments have given the OK for the flowers to go in. Any offers of spare bulbs or help with planting would be welcome!

Walking and cycling to Holt

Holt and Staverton communities are pressing for improved linkage between the villages. Although they're only half a mile apart few people walk the available public footpaths, as part of the way is on the road. As for cycling, relatively minor changes to road layouts would help more people to use the route. The government is encouraging councils to open more road space to pedestrians and cyclists, partly to help with social distancing requirements, but also to get a 'green dividend' out of the coronavirus crisis. Previous plans have foundered either because of cost or the lack of support from WC highways, but times are changing so we may have more success now.

Bath Clean Air Zone

As mentioned in previous editions, this was due to go live in November. However, that has now been delayed until at least January – Bath council say they are waiting for the government to give them a start date. The question for our area was how much difference it would make to traffic levels, particularly of HGVs, when added to the Cleveland Bridge closure which is already in place. Our traffic counts have obviously stopped over the last couple of months, but I'm hoping to restart in June.

Speedwatch

Staverton's Speedwatch scheme is currently in abeyance and will only restart when we get the OK from Wiltshire Police.



A section of the River Avon behind the Cereal Factory. Thank you to Hamish for submitting this photo.

Staverton and Holt flood gates

It seems a long time ago now, but back in the winter when we were having floods every couple of weeks there was some confusion with the gates. They were shut when the road was clear of flood water and open when it wasn't, or closed at one end but not the other. There will of course always be a gap between the perfect time to open or close the gates or put out signs for the Causeway, and the physical process of doing that – it's just a matter of reducing those times to a minimum, and letting everyone know what's happening. Suggestions about using social media to let people know when the road was passable got a frosty response from the council back in March, but during lockdown officers have had a chance to learn about such things so perhaps they'll be more positive next time!

I hope you all keep well and safe and if you need help with any covid- or council- related matters, or indeed with anything else, then please get in touch:

Contact details.

trevor.carbin@wiltshire.gov.uk

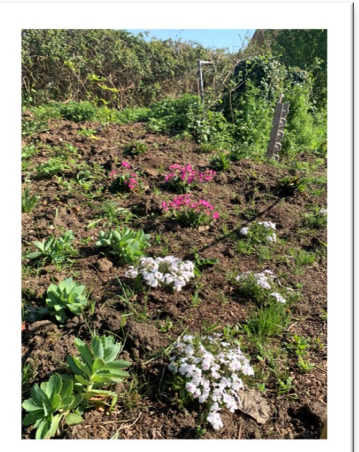
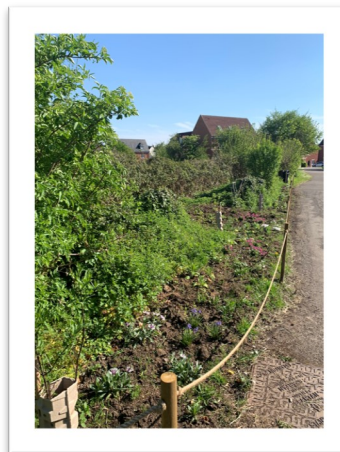
07757 506470

trevorcarbin.mycouncillor.org.uk

PS. It's now 25 years since I started as councillor for Staverton, back in May 1995 for the old West Wiltshire District Council. In those days the Parish Council met in what seemed like a broom cupboard in the club: since then they've used the school and Nestle before settling in the new Village Hall ... but then moving out again temporarily into the new world of Zoom. Meanwhile the village itself has expanded from a couple of hundred houses to nearer eight hundred. So just to say thanks to you all for putting up with me over that time...

Trevor Carbin

Wiltshire Councillor for Staverton



Flowers in the School Lane Butterfly Garden starting to take shape. (Photos taken in April)





ABU GAS & PLUMBING

Your Local Professional Service





For all your heating or plumbing needs, no job too big or too small.

Tel: 01225 754304

Email: matt.wakeling@abu-gas-plumbing.co.uk

Web site: www.abu-gas-plumbing.co.uk

- **EFFICIENT, CLEAN, AND FRIENDLY SERVICE**
- **GAS BOILER REPAIRS, INSTALLATIONS & SERVICING**
- **ALL HEATING, PLUMBING AND GAS WORK UNDERTAKEN**
- **FREE ESTIMATES**
- **GAS FIRES, COOKERS AND HOBS**
- **LANDLORD SAFETY & HOMEOWNERS MAINTENANCE CERTIFICATES**

Village Hall Committee to be formed

The Parish Council is looking to form a Village Hall Committee. Its purpose will be to manage the hall, and help increase its use by the community and as a source of income.

If you are interested in being part of this committee please contact Lindsay Shaw, Bookings Manager, by email to lindsay.shaw@stavertonparishcouncil.org.uk or on 07583 213420 (text or WhatsApp preferred)

INTERVIEW WITH LOCAL PHOTOGRAPHER—PETER CONNELL

Staverton News editions have often been enhanced by a variety of images captured by Peter Connell. Read on to find out more about Peter and his love of photography.

Q How long have you lived in Staverton?

We have been in Staverton for 26 years, before that we were in Trowbridge for a couple of years.

Q Where were you born / lived before Staverton?

Originally from Essex, my family moved to Wiltshire when I was 12, so we've been in this area for around 50 years.

Q At what age did you start to become interested in photography?

I'm not sure what started it, but for some reason as a teenager I had a desire to get a "proper" camera although I'm sure I had no idea what I wanted to take photographs of!

Q Is the Staverton neighbourhood a good source of images and (if so) why?

The countryside around Staverton is wonderful and really photogenic. Of course the canal offers other opportunities although I've never managed to be particularly successful with it.

Q What topics do you like to photograph besides the locality?

I find architecture fascinating, most often in black and white. Also, woods are always a great fall back if the weather isn't agreeable or particularly good for landscape photography. Fortunately we have a number of woods locally which are free and easy to access.

Q How often are you out taking photographs?

Every weekend I get out, sometimes on both days, usually for up to a couple of hours. I am always monitoring the weather forecast to see what it will be like at dawn and towards the end of the day, ie at times when the sun is low with softer and longer shadows.

Q Do you have a particular plan before going out to take your photos?

Almost always I have some idea of what I want to do before I leave the house. Having a project to work on is a great way of having a purpose for particular pictures. Of course, a project

might be a subject, or a type of picture (for example long exposure black and white).

Q What is your go-to camera and lens?

I use a Nikon D810 which is a high resolution camera as I like the ability to capture as much detail as I can. I also like to use a 14-24mm ultra wide angle zoom and a 24mm wide angle tilt-shift lens. Both lens are quite specialist and enable me to capture unusual perspectives. When using these lenses I always use a tripod which enables me to very carefully make sure the picture "works". I'm also keen on using filters to either balance the sky/foreground exposure, or to darken the light to enable long exposures of anything up to 5 minutes.

Q What is your view of the evolution from film to digital photography?

For many years I used film and developed and printed black and white pictures. Seeing the images appear in the developer was always magical. There are a lot of people still using film as it has different qualities. But for me digital is fantastic in every respect. Not having to think about the cost of clicking the shutter means I can take more pictures, improve the accuracy of the shots and in general practise more. Also, being able to work on pictures on the computer is so much more convenient and creative.

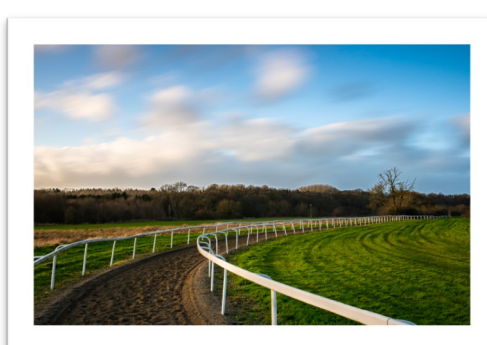
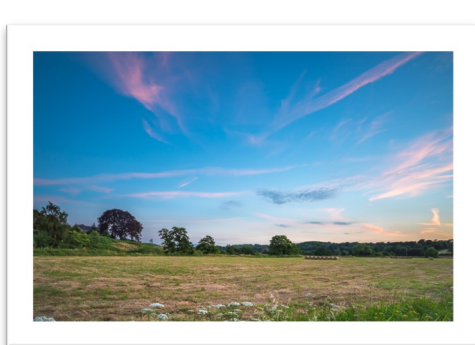
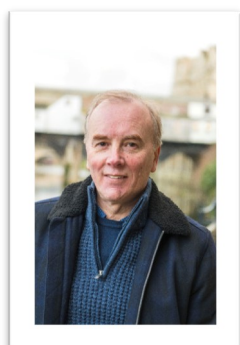
Q Any advice to budding local photographers?

Practice! It's like anything, the more you practise, the better you get. Top photographers only expect to get around 12 top pictures each year, so it should be expected that not every picture will be a masterpiece and it's a case of learning all the time. It's good to study top pictures in your chosen genre, try to work out how pictures were taken, what were the circumstances and what makes them good.

Q Can your pictures be purchased?

For the past 30 years or so I've run a software company, we have an office in Chippenham, so I don't make pictures to make money. But if anyone would like to purchase, there is a small selection at www.besthandmade.co.uk (a locally run website). I also upload photos to my website (www.pc-photography.net/latest) if anyone would like to see what I'm doing.

Thank you to Peter for agreeing to be interviewed. Below are a couple of Peter's photos taken in and around Staverton.



THOUGHTS FROM THE CHURCH

From the Curate Joy Albone:

How many times in recent weeks have we heard the phrase 'new normal'? I have heard it many times and even said it myself too, but what does it actually mean?

I know that there are certain aspects of our recent lockdown lives that I hope will continue to be part of that 'new normal'. For example, the reduction in pollution, the huge surge in community spirit that I have witnessed in Hilperton, Staverton and Semington and not forgetting the heightened recognition of the value of many of our lowest paid workers who are vital to our lives.

Our church communities have also been forced to consider a 'new normal' during the period of lockdown and beyond. We have sought new ways of reaching out to people online or by telephone and we have found new ways of worshipping God together, while abiding by social distancing rules to protect lives. However, it is not new to the people of God to consider different ways of being the followers of Jesus. At Pentecost, (50 days after Easter, which was celebrated on 31st May this year), we remembered that the followers of Jesus were all gathered together in one place, when they received the Holy Spirit in a way that has been described like a rushing wind and tongues of fire. The Holy Spirit enabled them to speak in other languages and enabled those who heard to understand what was said, each in their own language. The Holy Spirit enabled ordinary, simple men (and women): fishermen, a tax collector, a doubter, a cynic, a fanatic, and many more to talk about their faith, to talk about Jesus, in a way that none of them would have found easy beforehand. The earliest followers of

Jesus, those that had been with him during his earthly ministry, were all faithful Jews who attended the Temple to worship and now they were being joined by many who were not Jews, who could not attend the Temple, and they had to find new ways of being together and worshipping together, they had to find a 'new normal'! It was a 'new normal' that involved sharing meals and belongings; looking after those who were in need; learning, praying and worshipping together; finding new ways of being a community of God without a building or place of worship that they could all attend! A 'new normal' that involved proclaiming the saving grace of Jesus and the everlasting love of God to all that would listen. But it was not all 'plain sailing' for the early followers of Jesus. Many of them experienced persecution, imprisonment and even death as they sought to live a life of faith and tell the good news of the gospel of Jesus. However, they did not allow that to stop them.

So as we move forward, let us not lose sight of all the good that has come out of recent weeks. May we each take an active part in considering the values we want to see in our lives and the lives of those around us, and how our lives and our actions will reflect those values. Do not let us be pressured by those around us to abandon the good that has come out of this time for political expediency, the convenience of commerce or the false status of celebrity figures, instead let us continue to seek the common good for everyone in our communities.

May God bless you!

canalsidecurate@gmail.com

From Reverend John Rees: (canalsiderector@gmail.com 01225 764365)

For all of us our everyday lives have changed beyond recognition and we are having to find new ways of doing everyday aspects of our lives. The life of the Church is no different. The Church buildings are sadly but rightly shut, but our ministry continues in different ways. My role now involves:-

- ◆ Ensuring we can provide support and encouragement (and where needed practical help) to others. Joy, myself or members of our pastoral team are phoning people to chat and to check they are ok and offer help if needed. If you would like to be included in our contact list do send me an email or pick up the phone.
- ◆ Bereavement care: Although we can't have Baptisms or offer weddings at the moment, our support to those who sadly have lost loved ones continues. Even though the numbers who can attend funerals is limited we will offer memorial services later when we can. If you have been bereaved and we can help please get in touch.
- ◆ Providing online resources for both adults and children on our website: canalsidebenefice.org.uk. These range from prayers to craft activities and worship for young people; there are even instructions for making an origami tank.
- ◆ Preparing services. Although the doors of St Mary's in Horse Road, the Tin Church, and St Michael's in Hilperton have been shut (we hope that perhaps they might be open or near opening by the time you read this!) the Church certainly hasn't been closed. We are uploading an online service to YouTube every weekend and providing links to it on our website. The services are varied, including Communion, Morning Worship and services designed for all the family. We are also linking it to the church and village Facebook pages. Additionally we are offering live midweek worship at 10am every Wednesday via Zoom. The link may be found on our website or by contacting myself.
- ◆ Offering an online Alpha course for anyone interested in knowing more about Jesus and exploring the purpose of life. This will be via Zoom and will be a mix of film clips and discussion. If you would like to take part or know more, please contact me by email or phone.

I am encouraged by the wonderful community support being provided by so many in all our villages; it will be good to celebrate with a service and perhaps a party when this is all over!

We are all in
this together

it's not what we
do, it's how we do
it that makes
us different.

#Expectmore.



graysonflorenceproperty.co.uk

STAVERTON PARISH COUNCIL - CONTACT DETAILS

1	June Jones (<i>Parish Clerk</i>)	parishclerk@stavertonparishcouncil.org.uk
2	Simon Richardson (<i>Chair</i>)	chair@stavertonparishcouncil.org.uk
3	Mark Frati (<i>Vice Chair</i>)	mark.frati@stavertonparishcouncil.org.uk
4	Paul Nye (<i>Councillor</i>)	paul.nye@stavertonparishcouncil.org.uk
5	Ray Symonds (<i>Councillor</i>)	ray.symonds@stavertonparishcouncil.org.uk
6	Andrew Borresen (<i>Councillor</i>)	andy.borresen@stavertonparishcouncil.org.uk
7	Nicholas Woodall (<i>Councillor</i>)	nick.woodall@stavertonparishcouncil.org.uk
8	Kevin Lamb (<i>Councillor</i>)	kevin.lamb@stavertonparishcouncil.org.uk
9	Jeff Gibson (<i>Councillor</i>)	jeff.gibson@stavertonparishcouncil.org.uk
10	Lindsay Shaw (<i>Councillor</i>)	lindsay.shaw@stavertonparishcouncil.org.uk
11	Natasha Webster (<i>Editor of Staverton News</i>)	editornatasha91@hotmail.com
12	Lindsay Shaw (<i>Village Hall Booking Secretary</i>)	stavertonvillagehallbookings@stavertonparishcouncil.org.uk

Future Parish Council Meeting Dates: Meetings are held on Mondays, 7 p.m. at Staverton Village Hall. The next meeting will be held on Monday 13th July 2020.



Fields in Staverton at sunset, captured by Hamish.

Superior

T 01225 704311 E sales@superior.co.uk

Promote your business, event, or even yourself with our low run, cost effective print solutions.

Superior, Hercules Way, Bowerhill Estate, Melksham, Wiltshire SN12 6TS.

